



## The Industry Standard for Successful Construction Project Delivery

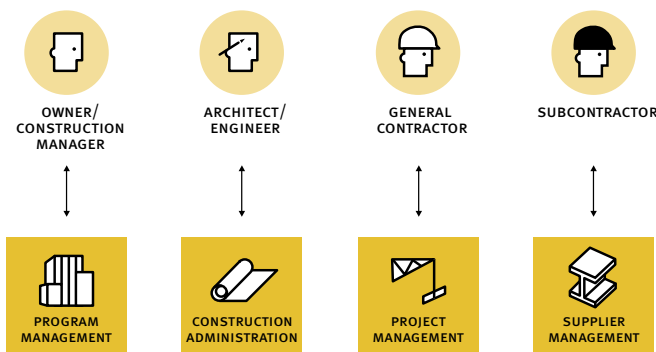
Prolog® Manager, from Meridian Systems®, provides complete project control by automating all aspects of the construction lifecycle, from project design to close out. By delivering in-depth project management features across projects and programs, Prolog helps both large and small organizations deliver their construction projects on time and on budget.

With features including: collaboration, purchasing management, cost control, document management and field administration capabilities, Prolog has been chosen by more than 8,500 of today's largest building owners, government agencies, and engineering and construction firms to improve top-line revenue growth while reducing their capital construction costs. Meridian was recognized in Constructech Magazine's 2006 National Construction-Technology Survey as the leading software vendor in the categories of project management software and collaboration for the construction industry.

Built on Microsoft® SQL Server™ database platform, Prolog Manager delivers robust, reliable and scalable performance. A software developer's kit (SDK) is also available to allow intelligent integration between Prolog Manager's cost-control module and other critical business systems.

### BENEFITS

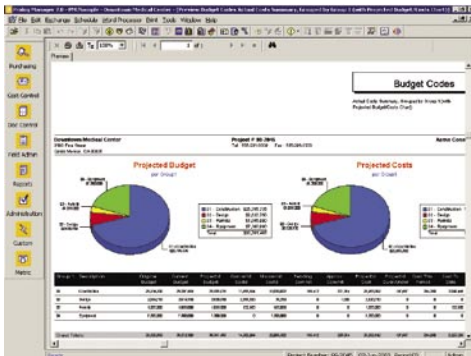
- › Optimize company performance by standardizing project data and project management processes across your entire organization
- › Increase visibility into your business by managing multiple projects in one database, allowing summary reporting and querying across projects
- › Reduce paperwork and review cycles on all project related documents including RFI's, change orders, submittals, meeting minutes, drawing packages, contracts, all important emails, and more
- › Increase staff productivity by automating repetitive processes and time-consuming tasks
- › Keep project costs on target with real-time cost management and budget tracking
- › Reduce risk and claims litigation by incorporating audit trails, and preventing lost project information
- › Track key performance indicators to monitor all levels of company profitability, efficiency and performance
- › Improve communication and collaboration across geographically dispersed project teams and external vendors
- › Improve field-level performance with a centralized job site tracking system
- › Share your project data with other critical business applications by integrating to accounting systems, scheduling applications, Microsoft applications, and more



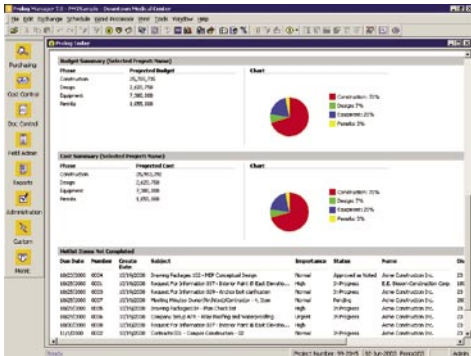
Prolog brings together the entire project team in one centralized project database.

## EXECUTIVE DASHBOARD

Feature	Advantage
Dashboards	Configure and customize multiple levels of metrics and track results at the corporate, project, or individual level
Metric Manager	Run metrics on a portfolio of projects with a single click; save time from entering individual projects and multiple packages
Dashboard Period Maintenance	Configure predefined time periods to collect data (weekly, monthly, quarterly)
Dashboard Summary Tab in Portfolio Manager	Group individual metrics into Summaries to collect data on individual or multiple projects at the same time
Metric Package Submission Forms	Create metrics; gather and organize data; easily summarize and report on performance results
Metric Packages	Post results of summaries and make available for analysis, review and approval



Run budget reports with charting for effective communication.



View a real-time summary of your project cost and document control with Prolog Today.

## REPORT MANAGER

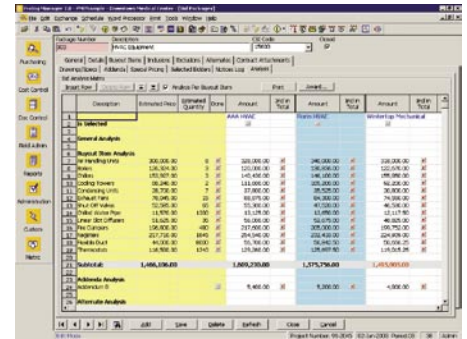
Feature	Advantage
Batch Reporting	Print groups of reports for simple, routine reporting
Exports Directly to PDF or XML	Easily distribute all report output using the Internet and email
Access to More Than 400 Reports	Get all the information you need when you want it
Full filtering and grouping	Selectively view the information that's important to you
Extensive report customization capability	Generate reports that meet your individual business process needs

## PORTFOLIO MANAGER

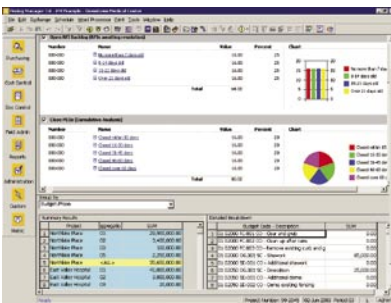
Feature	Advantage
Executive Dashboard Module	Easily track key performance indicators (KPI's) across all projects; identify problems or risks before impacting the bottom line
Prolog Today	Quickly view and manage selected projects or project groups from one location
Instant, Real-Time Project Summary	View pie charts showing project budget, costs and contract status
Centralized Database Maintenance Functions	Provide support for all administrative functions in one form
Security Capabilities	Safeguard project information from unauthorized use
Multi-Language Support	Use for international projects
Switchboard	Configure the switchboard menu to follow your business process
Customization Capabilities	Adapt Prolog Manager to fit your needs
Microsoft Word or Built-In Word Processor to Generate Letters	Improve productivity by using full-featured Microsoft Word within Prolog Manager
Multi-Project Reporting, Querying and Security	Save time by tracking multiple projects quickly in one database—login once and open any project

## PROCUREMENT CONTROL

Feature	Advantage
Advanced	Company Setup: Improve record keeping; track detailed information, including qualifications, certifications and contract history
Buyout Groups	Group buyout items into logical groups or systems for cost analysis
Addenda	Manage pre-bid scope; track addenda for all bid packages affected
Award Bid Package Wizard	Eliminate double entry in procurement and contract management
Bid Analysis	Analyze all bidders using one easy-to-use matrix
Bid Packages	Manage buyout more efficiently; track all scopes of work as bid packages
Buyout Items	Eliminate scope errors; track all items to procure for each project
Contract Attachments	Log all contract attachments that bidders are responsible to acknowledge
Select Bidder Wizard	Increase choice of bidders; search for companies that meet your qualifications
Send Notices Wizard	Facilitate communication with bidders; send bid invitations and quote requests via email or fax



Manage competitive bidding process and analysis across multiple projects.



Track Key Performance Indicators (KPI's) to monitor all levels of company profitability, efficiency and performance.

## COST CONTROL

Feature	Advantage
Budget	Manage budgets, commitments, costs and savings/overruns
Application Integration Software Development Kit (AI-SDK)	Produce programs that connect your accounting system to Prolog Manager
Change Order Requests	Reduce change order request cycle
Budget Control Log	Identify exposures, trends and budget transfers
Change Orders	Record changes in Prolog for instant budget updates
Applications for Payment	Save time; generate requisitions from invoices and change orders
Contracts	Write contracts faster using Microsoft® Word
Expenditure Authorizations and Funding Assignments	Run reports by account or funding source to determine dollars spent from each source
Invoices	Update the cost-to-date project budget with automatic invoice recording
Potential Change Orders	Integrate change management directly into the budget
Purchase Orders	Write purchase orders faster; use material catalogue for quick PO generation
Revenue Codes	Learn revenue sources through tracking reports

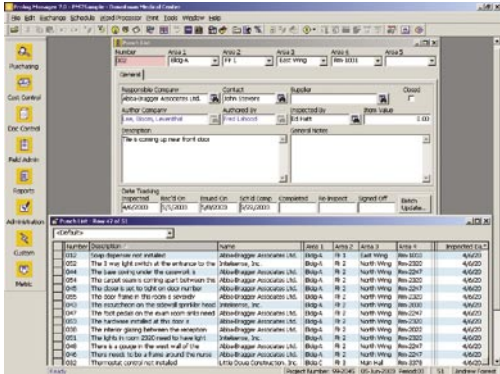
## DOCUMENT CONTROL

Feature	Advantage
Auto Alerts	Stay alert to critical follow-up items
Drawing Packages	Manage content, status and transmittal of drawing packages
HotList	Track follow-up items
Drawings and Specifications	Log and track revisions on all drawings and specifications
Dunning Letters	Stay on top of all issues and reduce risk by maintaining an audit trail
Issues	Create an issue history to record all information related to specific issues
Meeting Minutes	Reduce problem resolution time by sharing meeting information more quickly
Requests for Information	Reduce response time and impact on project schedule
Submittal Packages	Improve submittal response times
Submittal Register	Track required submittals to improve timeliness
Transmittal Queue	Save time by scheduling transmittals to the printer or fax



## FIELD ADMINISTRATION

Feature	Advantage
Calendar	Keep track of events and other significant dates in your project
Closeout Log	Manage closeout tasks to complete the project more quickly
Crew/Employee Tracking	Track man hours and electronic time sheets
Daily Details	Record weather and general conditions for each project
Daily Work Journal	Record daily construction activities
Events	Track production and milestone events
Field Work Directives	Reduce risk of surprise changes (for authorized work)
Inspections and Tests	Verify compliance with required inspections and tests
Material Inventory	Document all deliveries and associated inventory
Notices to Comply	Increase quality control on a project
Punch List Tracking	Reduce time required to complete a punch list
Safety Notices	Reduce safety violations and accidents through safety management



Effectively manage daily work journals, crews and equipment, events, inspections, test, safety notices, punchlists and other quality control tasks in a centralized tracking system within Prolog.

## EMAIL LOGGING

Feature	Advantage
Dedicated Project Email	Prevent lost information by keeping important emails in a central project database. Search, find and use email information in reports, queries, and building issues
Attachments	Team members can forward their emails, along with any attachments to a dedicated project email account
Email Logs	Establish a project communication history and immutable audit trails
Security Manager	Keep information secure by easily managing access to project email database
Email Protocol	SMTP and MAPI, allowing Prolog to work with just about any email system
Compatibility	Microsoft Exchange/Outlook, Lotus Notes/Domino and many others

### Required Hardware

**Minimum:** Intel® Pentium® 500 MHz or equivalent processor; Recommended: 550MHz or higher  
Microsoft® Windows® 2003 (English version), XP (Home and Professional), 2000 (all versions), NT® (4.0 with Service Pack 6 or later).

**Minimum:** 64 MB RAM memory; Recommended: 256 MB RAM

Other disk space requirements depend on the components selected during a Custom setup.

For more information on server capacity needs, see the technical bulletin B7014 - Server Storage Capacity Guidelines.

### Required Software

**Minimum:** Microsoft Internet Explorer 5.01 (excluding Internet Explorer: Macintosh Edition); Recommended: 5.5 to 6.0. Internet Explorer is not required as a Web browser, but the IE system files must be present in order to install Microsoft Data Access Components (MDAC).



2005 Technology's Hottest Companies—Constructech Magazine



Best of 2005, Editor's Choice Award—Construction Executive Magazine



2005 Vision Awards—Constructech Magazine



1180 Iron Point Road  
Suite 300  
Folsom, California 95630  
USA

(916) 294 2000  
(916) 294 2001 fax  
(800) 850 2660  
www.meridiansystems.com  
sales@meridiansystems.com

©Copyright 2006 Meridian Project Systems, Inc. All rights reserved. Prolog, Proliance, Meridian Systems, and ProjectTalk are registered trademarks of Meridian Systems, Inc. in the United States and other countries. The names of other products mentioned herein may be trademarks of their respective owners. MSS-1043-1205-400