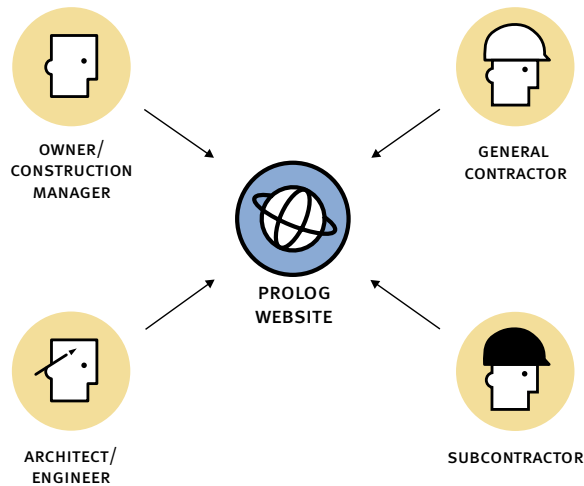


## Internet Collaboration for Project Teams

Prolog® WebSite, from Meridian Systems®, complements Prolog Manager as a web-based collaboration application designed for the extended project team, ensuring all participants, including the owner, architect, construction manager, general contractor, subcontractor, and suppliers, are well coordinated throughout the construction process.

Prolog WebSite connects project team members to one another and to the images, documents, and database information they need, all in real time. Project teams eliminate communication problems with Prolog WebSite's robust workflow process and by sharing design drawings, jobsite photos, project schedules and more than 400 reports. All this functionality is easily accessed through a browser from any computer with an Internet connection.

Designed for both document and data management, Prolog WebSite offers an intuitive, easy-to-use interface for all users. For performance reliability and scalability, Prolog WebSite runs on the Microsoft® SQL Server™ database.

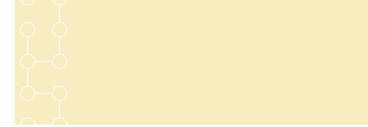


### Collaboration for the Project Team

Use Prolog WebSite to collaborate with your project team, managing both project data and documents.

### Benefits

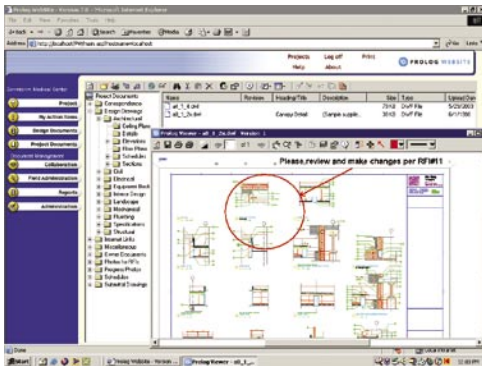
- › Reduce project schedules by collaborating more effectively with project participants
- › Improve document control by streamlining the review process, easily tracking revisions and storing master files
- › Reduce overnight shipping costs by using powerful document management features for viewing and redlining files
- › Access complete and accurate project information and reports from anywhere in the world
- › Standardize company business practices using powerful web-based collaboration
- › Increase efficiency by automatically integrating with Prolog Manager



## PROLOG WEBSITE IS DESIGNED FOR THE ENTIRE PROJECT TEAM

Owners, architects, engineers, construction managers, general contractors, subcontractors and suppliers can collaborate on time-sensitive project information from anywhere they have Internet access. Companies appreciate the flexibility and security of hosting their project collaboration solution in-house by running Prolog WebSite.

Customize Prolog WebSite to meet your company requirements and match the real-world specifics of your projects.

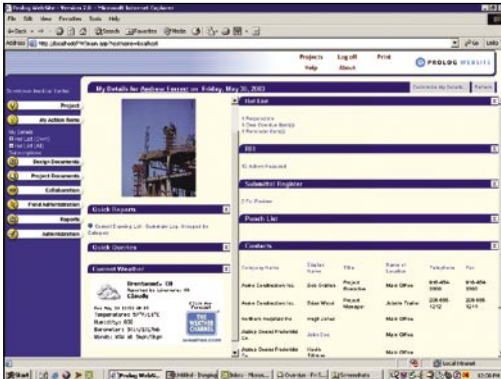


Manage both design review and shop drawing coordination collaboratively through Prolog WebSite.

## PROLOG WEBSITE

Feature	advantage
Context-Sensitive Help	Get help when and where you need it
Extensive Customization Capabilities	Enjoy the flexibility of being able to personalize Prolog to meet your company requirements
Project Filtering	View only those projects you are interested in
Customizable Menu	Configure the menu to reflect your needs
Easy to Use Process-Driven Interface	Bypass training and move into operation
Internet Links	Save time—link your frequently visited sites to the MyDetails page
Multi-Project Database	Run reports across one or more projects
Project-Specific Custom Nomenclature	Configure your Prolog application to match the real-world project specifics
Run More Than 400 Reports	Quickly produce reports on demand from any personal computer with a browser including budget analysis, change orders, RFI log, submittal logs, and many more
System Messages	Improve communication from administrator to users
Audit User Activity	Monitor user activity automatically with auditing controls





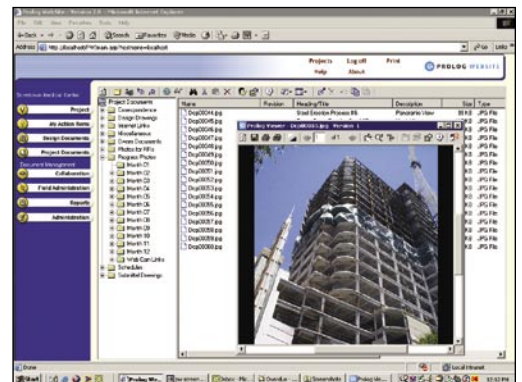
Quickly view a snapshot of your project including current weather, your favorite reports and active hotlist, RFI, submittal and punchlist records.

## MY DETAILS - MY PERSONAL DESKTOP

Feature	Advantage
Role-based Information	Save time with alerts of RFIs, submittals and punch list items requiring your action
Subscriptions To Project Information	Save time by letting Prolog Manager inform you of changes to the database
Hotlist	Proactively manage your project with a personalized action list
Current Weather	Predict delays and understand field conditions remotely
Quick Reports	Save time by creating links to your favorite reports
Quick Queries	Find the project data you need quickly with a saved query
Project Contacts	Find project team contact phone numbers quickly within Prolog WebSite

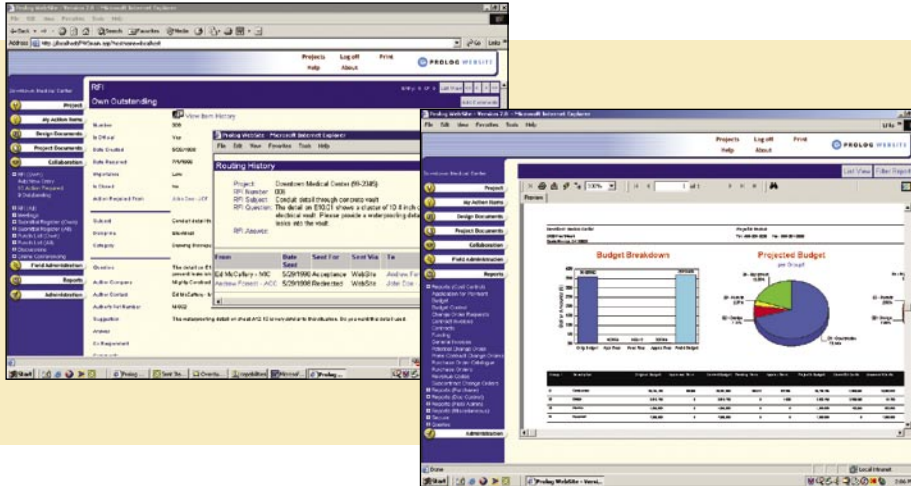
## DOCUMENT MANAGEMENT

Feature	Advantage
Document Design and Review Process	Efficiently manage documents with a streamlined design and review process that prevents duplication or rework from miscommunication
File Check-In/Check-Out	Leverage historical audit trails that track who changed what, and when
Version Control	Easily keep track of all versions of your documents
File Upload Wizard	Upload and organize your project files in an intuitive folder structure
Document Viewer	Use new Prolog Viewer to redline, mark-up and comment on an uploaded file
Document Security	Define user-level security permissions on all files and folders
File Management	Easily manage project files in streamlined folder structure, like Windows Explorer
Drawings and Specifications	Exert greater quality control through electronic control of drawings
Permissions Model with Inheritance	Save time managing document security at the folder and file levels



Track and mark up your digital images, drawings and other files in Prolog WebSite.

Cut your RFI response time significantly by managing your workflow process online using Prolog WebSite.



Print more than 400+ standard reports including this Budget Analysis Report, or your own custom reports.

## COLLABORATION

Feature	Advantage
Meeting Minutes	Improve decision making by allowing entry and access to meeting minutes from anywhere
Requests for Information	Reduce response times and improve project schedules by managing your workflow process online
Submittal Register	Proactively list all required submittals
Submittal Packages	Maintain a paper trail on submittals and reduce response times

## FIELD ADMINISTRATION

Feature	Advantage
Daily Details	Maintain tracking information for historical record
Daily Work	Save time by allowing trade contractors to enter their own daily work journal entries
Reports	Access daily construction, event, labor, material inventory and many other reports from your browser
Punch List	Reduce punch list resolution time

### System Requirements: Server

**Minimum:** Intel® Pentium® 300, Recommended: 500 or higher

Microsoft Windows® 2000® (Professional, Server, Advanced Server), XP® (Professional)

**Minimum:** 64 MB memory, Recommended: 128 MB

**Minimum:** 250 MB hard disk space free for installation; 440 MB if SQL Server is not already installed

Microsoft Internet Information Server (IIS) 5 or higher

**Minimum:** Microsoft Internet Explorer 5.01 (excluding Internet Explorer: Macintosh Edition), Recommended: Microsoft Internet Explorer 5.5 or higher

**Internet Service:** Provider and connection; Minimum Bandwidth; ISDN (128Kb/s), Recommended: Fractional T1 or higher

### System Requirements: Client

**Minimum:** Intel Pentium 100, Recommended: 500 or higher Minimum: Microsoft Internet Explorer 5.01 (excluding Internet Explorer: Macintosh Edition), Recommended: Microsoft Internet Explorer 5.5 or higher

**Internet Service:** Provider and connection; Minimum Bandwidth; 56K dial-up, Recommended: ISDN or Direct Subscriber Line or higher

2005 | TECHNOLOGY'S HOTTEST



2005 Technology's Hottest Companies—Constructech Magazine

2005 Vision Awards—Constructech Magazine



1180 Iron Point Road  
Suite 300  
Folsom, California 95630  
USA

(916) 294 2000  
(916) 294 2001 fax  
(800) 850 2660  
www.meridiansystems.com  
sales@meridiansystems.com

©Copyright 2006 Meridian Project Systems, Inc. All rights reserved. Prolog, Prolance, Meridian Systems, and ProjectTalk are registered trademarks of Meridian Systems, Inc. in the United States and other countries. The names of other products mentioned herein may be trademarks of their respective owners. MSS-1042-1205-300