

PROLOG ► Converge



Web-based Construction Project Management, Powered By Prolog

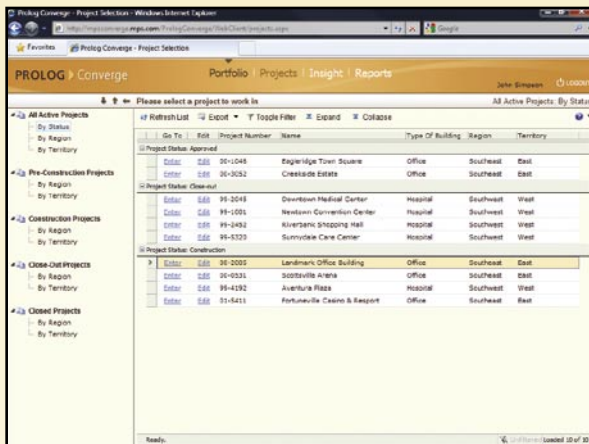
Prolog® Converge is a Web-based project management application powered by Prolog, the industry standard for successful construction project delivery. Today's construction organizations face many challenges including how to bring extended project teams together across geographical locations, in online and offline environments, and across different technology systems and devices. By providing a rich Web-based user interface on a powerful Web services platform, Prolog Converge allows project teams to collaborate more efficiently and gives users the flexibility to choose how they access critical project data.

Prolog Converge provides project management capabilities in the areas of Collaboration, Reporting, Document Management, Field Management, as well as support for Mobile solutions and Building Information Modeling (BIM) integrations.

Project-based organizations within AEC, Commercial, and Public sector industries use Prolog to improve top-line revenue growth while reducing their capital construction costs. Prolog Manager helps general contractors, engineering firms, building owners and public agencies efficiently manage all critical project data in one central software system, ensuring project management best practices are followed. With Prolog Manager, your project team members can quickly identify and mitigate potential areas of risk—before they impact project delivery performance or your bottom line.

Benefits

- Bring your entire project team together, including owners, general contractors, designers and subcontractors, in a real-time, online project management environment.
- Increase user adoption within your organization through role-based user interfaces.
- Make decisions quickly using up-to-date project data from field workers using mobile solutions.
- Increase efficiencies by enabling interoperability between Prolog construction project management and your other critical business applications.
- Create end-to-end business solutions with an extensible, interoperable Web services platform that allows diverse systems and organizations to work together.
- Lower your risk by integrating Building Information Modeling (BIM) data with your project management system.



Prolog Converge provides a rich, Web user interface for viewing and managing construction project portfolios.

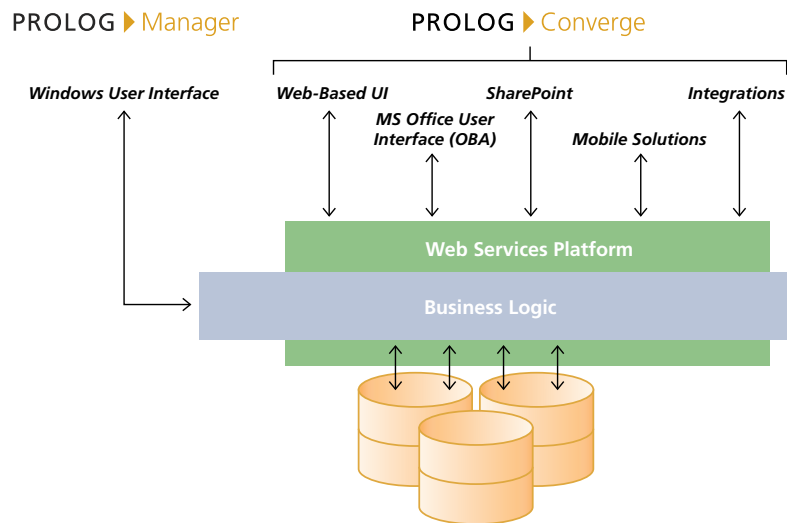
Prolog Web Services Platform

Meridian's investments in native XML Web services technology have resulted in the "Powered by Prolog" advantage, a powerful platform that delivers user choice and integration flexibility. Powered by Prolog means redundant data entry and isolated data silos are eliminated. Project-based organizations can access Prolog through multiple interface options including:

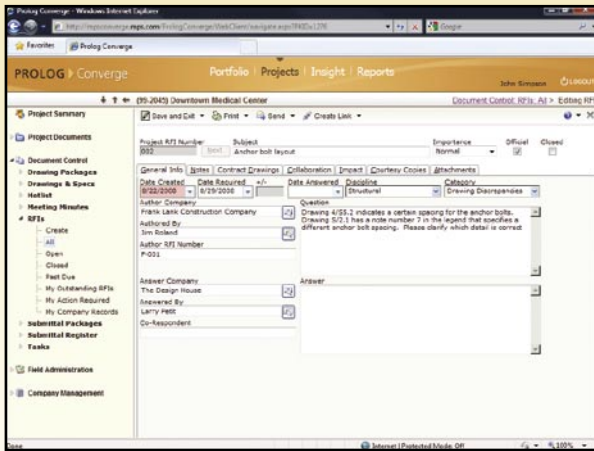
- ▶ A rich, Web user interface
- ▶ Role-based Microsoft Office Business Applications (OBAs)
- ▶ Mobile devices
- ▶ SharePoint portal applications
- ▶ Integrations with other critical computing systems

Unlike traditional Web-based applications, the Prolog Web services platform allows the exchange of Prolog data with other systems while tightly maintaining data integrity, and adhering to the business logic, security settings and the system nomenclature established by your project-based organization. Security-based access to portfolios, projects and data means user and project activities can be tracked and accounted for. The Prolog platform creates new opportunities for developers to integrate Prolog with third-party software, and to build custom applications or interfaces.

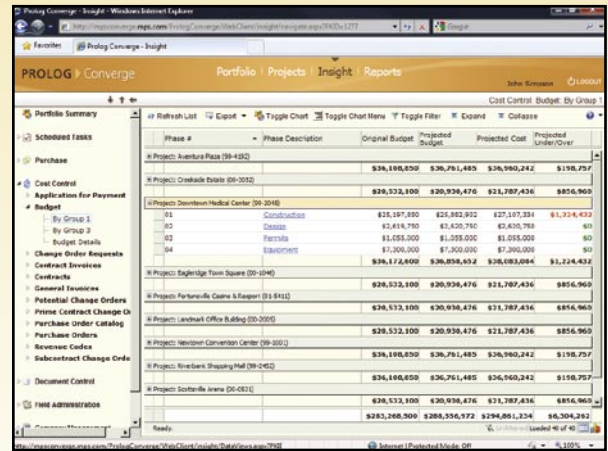
PROLOG ▶



By leveraging Web services, Prolog Converge addresses collaboration challenges, overcomes application interoperability, and provides end-users with flexible access, making your project teams more successful.



Intuitive, easy-to-use data entry forms that mirror Prolog Manager.



The Insight module provides 360-degree views of Prolog data with drill-down capabilities.

Collaboration

Feature	Advantage
Rich, Web user interface	Provides an easy-to-use, online environment for your construction project teams to create, read and edit project information.
Anytime, anywhere access to project data	The Web interface of Prolog Converge, along with the Web services platform, provides a low cost deployment model for collaborating across your extended project teams.
Familiar data entry screens	The look and feel of Prolog Converge is similar to Prolog Manager, so user training is minimized.
Intuitive, easy-to-use data entry on the following Prolog forms	Document Control: Drawing Packages, Drawings & Specs, Hotlist, Meeting Minutes, RFIs, Submittal Packages, Submittal Register, Tasks. Field Administration: Daily Details, Daily Field Reports, Daily Work Journal, Events, Punch Lists. Company Management: Company Setup.
Flexible views of project data through 'read access' to these Prolog areas	Purchasing – All forms Cost Control – All forms Field Management – All forms Document Management – All forms.
User-defined sorting and grouping of projects	Customize project views by user level.
Security	Role-based security access to projects.

Insight Module

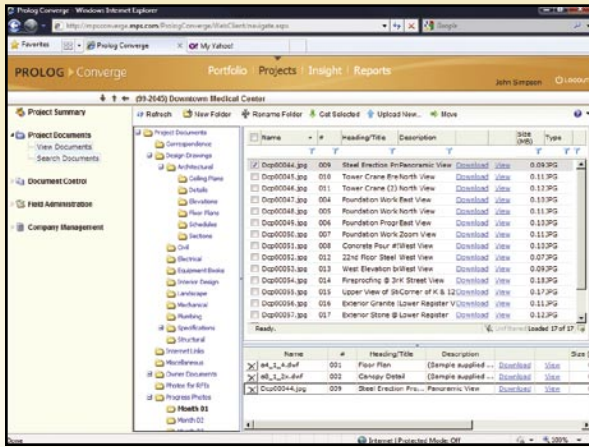
Feature	Advantage
Comprehensive Dashboards	Create 360-degree views of Prolog data with drill down capabilities. View dashboard data including project metrics and KPIs.
Configurable by Role	Provide views that are configured by project team role, such as project executive, owner, project manager.
Export data for enhanced reporting	Easily export Prolog data into other data formats such as Microsoft Excel, HTML, PDF, RTF or Plain Text.

Configurable Interfaces

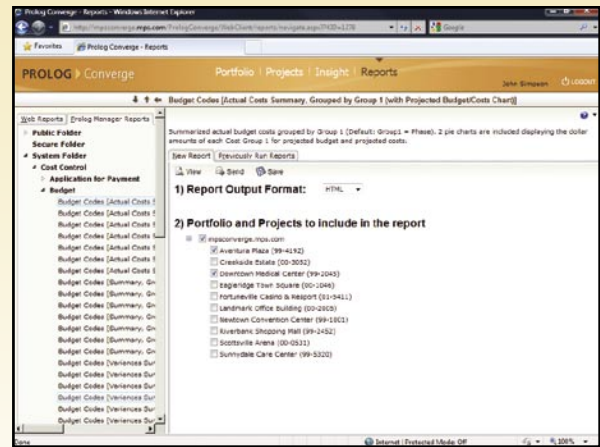
Feature	Advantage
Create user interfaces tailored to specific project team roles, using OBAs	The Prolog Web services platform supports OBAs, allowing users to access project data via Excel, or other Microsoft Office applications, improving productivity and increasing user adoption. For example, your users can securely connect to the Prolog database using Excel, and view and update punch list items. Bi-directional data exchange occurs in real-time.
Portal integration with Microsoft SharePoint	OBAs also allow data exchange with Microsoft SharePoint, giving you the flexibility to create project portals for sharing information.

Document Management

Feature	Advantage
Document Management	Centrally manage all project-related documents in one location and allow online, secure access based on user permissions. Quickly upload and link one or more files to Prolog data. Organize files into a streamlined folder structure similar to Windows Explorer.
Document Security	The Prolog security model enforces read and write privileges throughout the document management system.
View and Redline	View files in native applications, or use the RasterEX Viewer to view hundreds of file types. Redline and mark-up files using RasterEX's native capabilities.
Advanced File Searching	Common file formats are indexed to permit rapid content searching.



Centrally manage project-related documents in one location and allow online, secure access based on user permissions.



Gain Web access to all Prolog reports; view project information using various metrics and filters.

BIM Integrations

Feature	Advantage
BIM Integrations	Leverage Web services to create integrations between BIM models and Prolog, creating powerful building management solutions. For example, you can integrate clash detection information from multiple BIM models into the RFI process within Prolog. BIM data can also be exchanged with Submittals within Prolog, as well as other construction processes.

Reporting and Queries

Feature	Advantage
Powerful reporting module	Execute advanced queries across multiple records, project and Prolog databases. View, filter, and group projects based on various metrics such as region, status, project size, and more.
Support for other reporting formats	Launch Prolog Crystal Reports and easily export to native viewers such as Excel and Adobe Reader.

Mobile Solutions

Feature	Advantage
Mobile applications	Deploy Prolog on mobile devices to allow field personnel, including superintendents, field inspectors, and resident engineers to have bi-directional access to field data, such as daily work journals, punch lists and RFIs.
Online and offline access for mobile field workers	Users can have offline access to Prolog using an OBA. Once connected, data is automatically synchronized with the main Prolog database.

Notification Subsystem

Feature	Advantage
Email Notifications	Schedule notifications to be sent via email when action is required by a project team member.
Automated reports and alerting	Schedule reports to run at specific times or for specific intervals. Create automatic email alerts when certain thresholds are met.
Content	Control content of the notification, and control output of the content.
KPIs	Use notifications to help facilitate collaboration and mitigate risk, by setting up notifications around key performance indicators.
Hyperlinks	Notifications can be configured with hyperlinks to drive a user to a specific Prolog record or information location with a single click.
Notifications from other applications	The Notification subsystem helps monitor and mitigate risk from other applications that have been integrated with Prolog Converge.

Minimum Requirements

- ▶ **Hardware:** In a production environment, Prolog Converge performs best on a modern multi-core processor (Meridian recommends at least 4) with more than 1 GB of memory per core. Better performance is achieved with faster processors and more memory.
- ▶ **Software:** Windows Server 2003 or Windows Server 2008
- ▶ **Database Server:** SQL Server 2005
- ▶ **Virtualization (optional):** Hyper-V or VMWare
- ▶ **Prolog Manager:** At least one installation of Prolog Manager 2008 R1 and above



1720 Prairie City Road
Suite 120
Folsom, California
95630
USA

(916) 294 2000
(916) 294 2001 fax
(800) 850 2660
www.meridiansystems.com
sales@meridiansystems.com

© Copyright 2009 Meridian Systems. All rights reserved. Prolog and Meridian Systems are registered trademarks of Meridian Systems, an independent subsidiary of Trimble, in the United States and other countries. The names and logos of other companies mentioned herein may be trademarks of their respective owners. This document is for informational purposes only. Meridian Systems makes no warranties, expressed or implied, in this document. MSS-1043-00-0909